



HM70A with Plus

The HM70A with Plus helps make ultrasound exams and ultrasound-guided procedures more accurate and streamlined with its image performance and efficient, easy to use features. Advanced imaging technology, such as the NeedlePilot™, is incorporated into the HM70A with Plus and is the right choice for physicians and sonographers who want to deliver excellence in patient care and clinical efficiency wherever they go.

HM70A with Plus

Deliver excellence wherever you go

The HM70A with Plus helps make ultrasound exams and ultrasound-guided procedures more accurate and streamlined with its image performance and efficient, easy-to-use features.



HM70A with Plus

Intuitive Guidance

See more intuitively with HM70A with Plus. With intelligent solution such as NeedlePilot™, the HM70A with Plus brings a new level of productivity to the clinical environment.

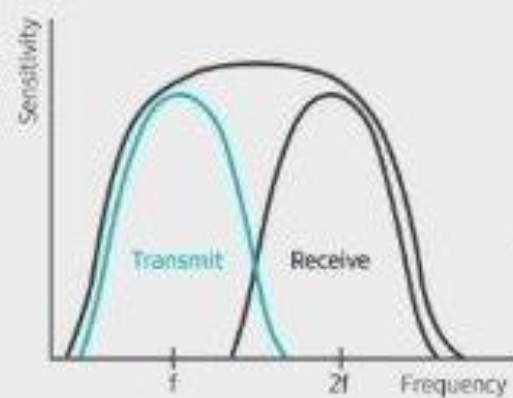


Excellent image quality

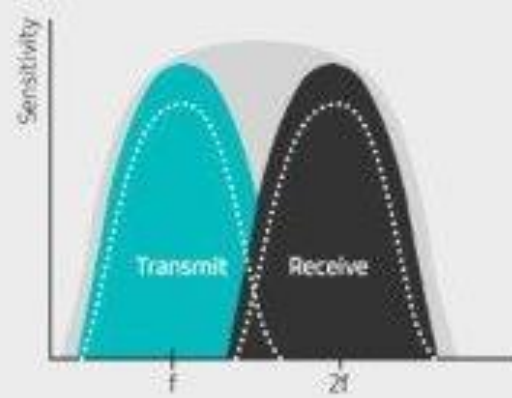
S-Vue™ transducers (CA1-7AD, CA2-9AD)

The S-Vue transducers provide broader bandwidth and higher sensitivity over conventional Samsung transducers.

They enable higher resolution at depth thereby providing improved image quality even with technically challenging patients.



Transmit/Receive at
conventional transducer



Transmit/Receive at
S-Vue™ transducer



ClearVision

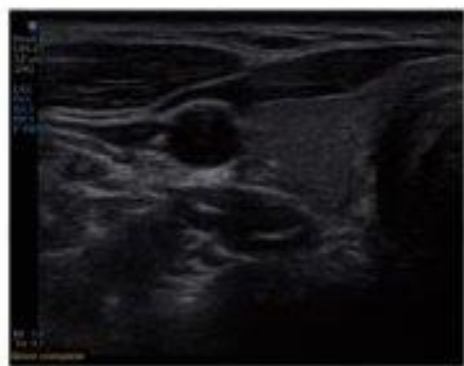
ClearVision eliminates unwanted speckle noise, providing excellent image clarity.

- Speckle Reduction
- Edge Enhancement
- Contrast Enhancement



MultiVision™

MultiVision™ compounds many scan lines to provide remarkable spatial and contrast resolution.



MultiVision™ OFF



MultiVision™ ON

S-Flow™

S-Flow™ is a sensitive color Doppler that can reveal peripheral blood vessels even when blood flow detection is difficult.

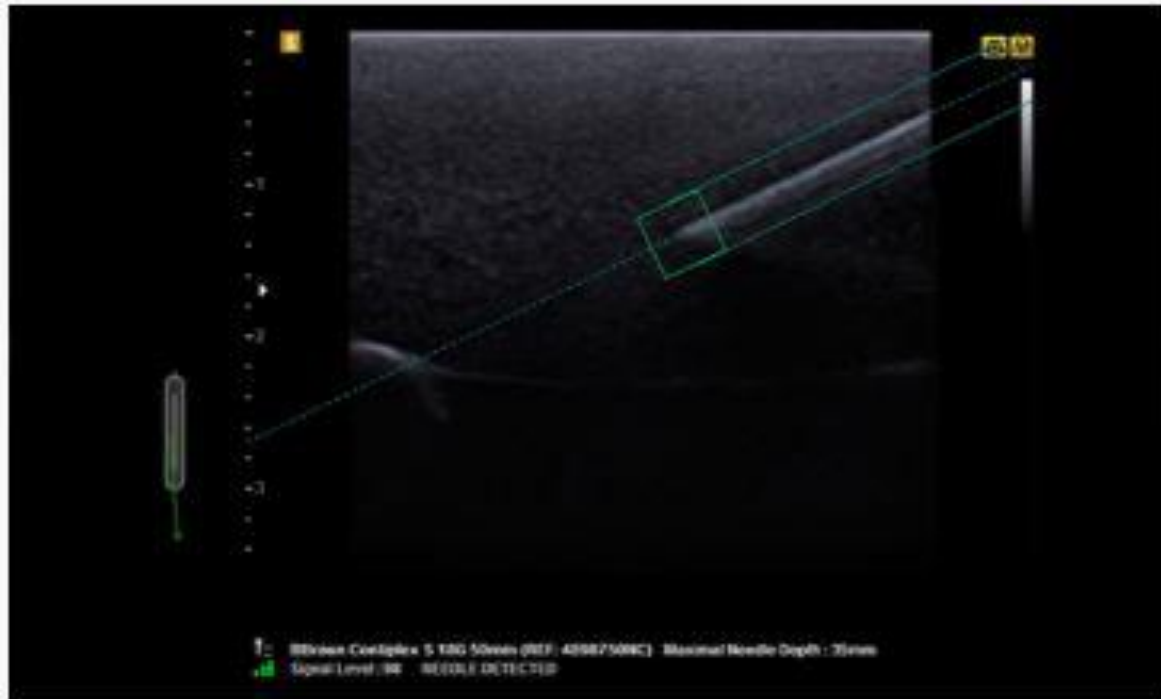


S-Flow™

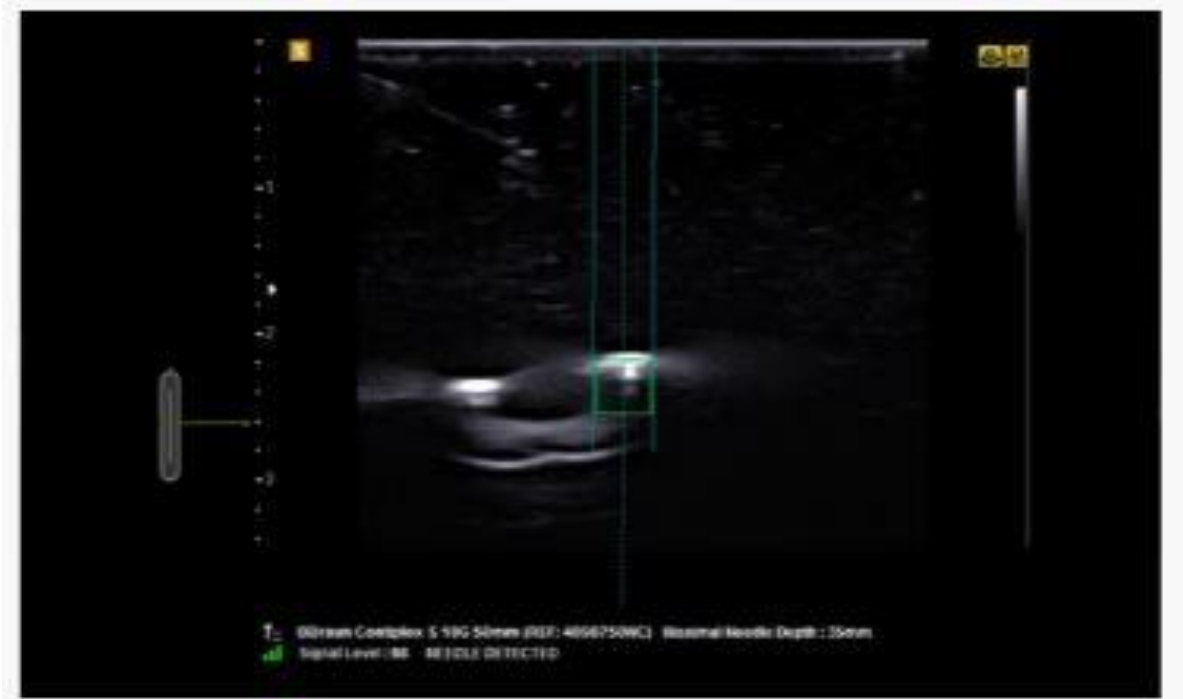
Excellent Point-of-Care solutions

NeedlePilot™

NeedlePilot™ uses magnetized needle and magnetic sensors embedded in the transducer to provide onscreen color-coded graphics that clearly identify the correct needle plane. This makes it simple to identify the correct needle trajectory to reach the target anatomy, making NeedlePilot™ useful for both In-Plane and Out-of-Plane approaches.



In-Plane/Out-of-Plane (Phantom)



In-Plane/Out-of-Plane (Phantom)

Learn More – HM70

EzAssist™

As a reference tool for plane scanning, EzAssist™ has multiple clinical applications during live scanning. This allows clinicians to practice procedures using valuable reference materials such as clinical reference images and animation.



Internal Jugular Vein



Kidney

Qpath™

The HM70A can be connected to the Qpath™ cloud server provided by Telexy. Users can transfer patient information and images to Qpath™ cloud server via wired/wireless LAN. The HM70A uses Q-View to access to the Qpath™ cloud server.

Barcode Scanner

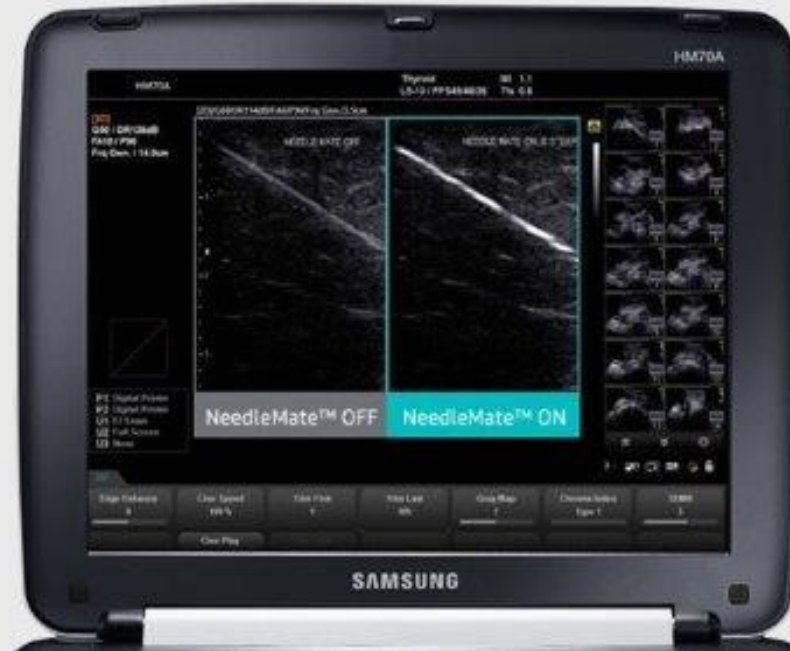
Patient information can be automatically transferred to ultrasound system by scanning the bar-code.

[Learn More – HM70](#)

Excellent musculoskeletal solutions

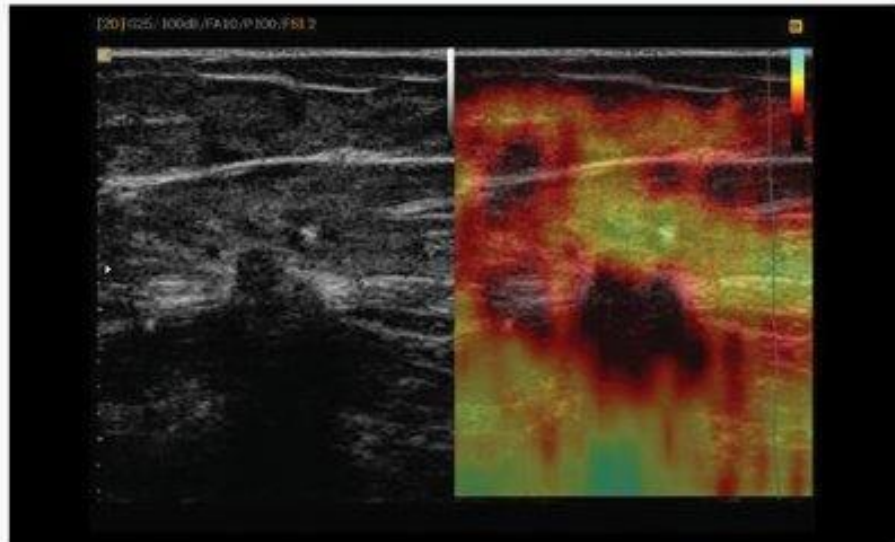
NeedleMate™

With pinpoint precision, NeedleMate™ delineates needle location when performing interventions such as nerve blocks. Improved accuracy and efficiency in diagnosis are possible with beam steering added to NeedleMate™.



ElastoScan™

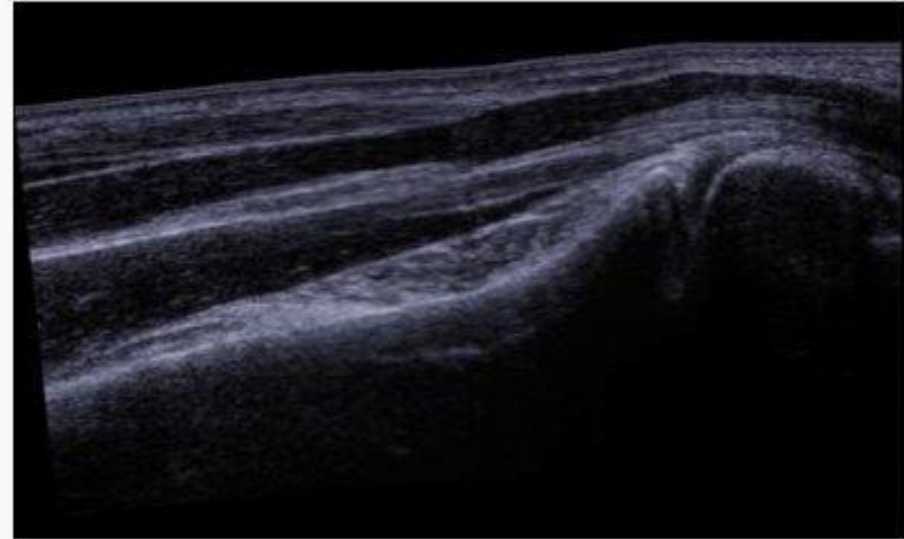
ElastoScan™ detects the presence of a solid mass in tissues and converts the stiffness into color images. It verifies the presence of lesions, reducing the burden of further cervical palpation.



Breast lesion with ElastoScan™

Panoramic

Panoramic imaging displays as an extended field-of-view so users can examine wide areas that do not fit into one image as a single image. Panoramic imaging also supports angular scanning from linear transducer data acquisition.



Panoramic

Excellent cardiovascular solutions

AutoIMT™

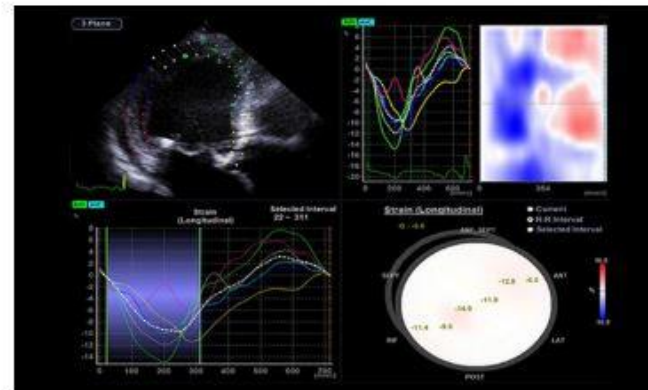
AutoIMT™ allows fast measurement of the carotid artery intima-media thickness (IMT) for diagnosis of the patient's risks of stroke or heart attack. The simple operation helps enhance exam productivity and increase patient throughput.



IMT measured with AutoIMT™

Strain

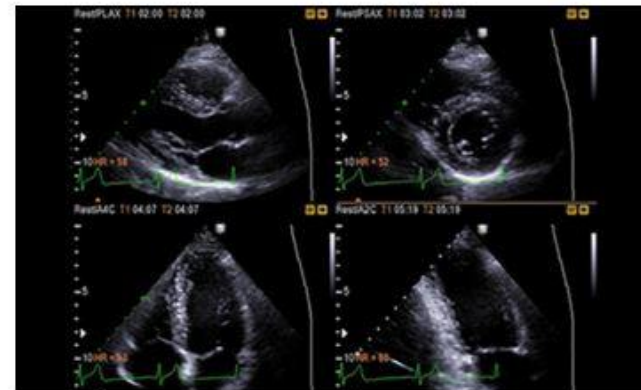
Strain quantitatively displays a Bull's Eye which shows left ventricular motion and dyssynchrony at a glance.



Strain

StressEcho

The StressEcho package includes wall motion scoring and reporting. It includes exercise StressEcho, pharmacologic StressEcho, diastolic StressEcho, and free programmable StressEcho.

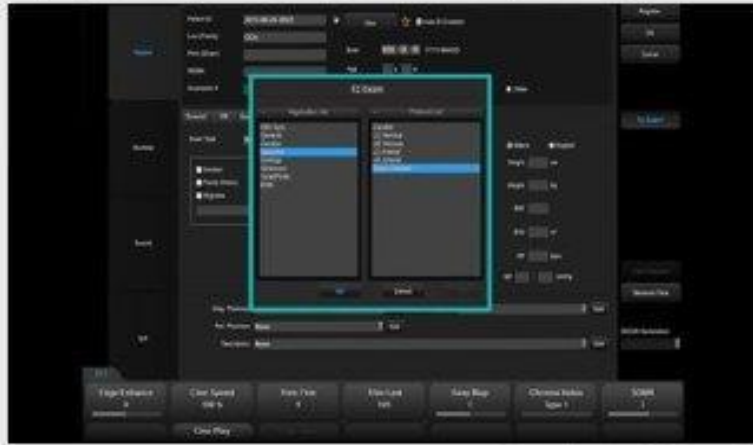


StressEcho

A variety of tools to increase efficiency

EzExam™

EzExam™ enables users to build or to use predefined protocols. It transforms the ultrasound investigation into a streamlined process. EzExam™ ensures the full investigation is performed, eliminating the risk of forgetting an image or loop capture, as well as measurement and transducer preset changes.



Set up display of EzExam™

QuickScan™

In 2D imaging, QuickScan™ quickly optimizes brightness levels by adjusting the gain and TGC controls. In PW spectral Doppler Mode, QuickScan™ easily optimizes the spectrum by adjusting the scale and baseline.



Liver with QuickScan™



Fast Booting

SSD technology enables powering on in 85 seconds from the powered off state, and in approximately 25 seconds from the sleep mode.



Full Screen Mode

With one touch, users can expand the image area to fit the entire screen, optimizing the view for image analysis.



Extended battery

The extended battery supports approximately 3 hours of system operation when it is fully charged.

Secure Your Care

Samsung Healthcare Cybersecurity

Intrusion Prevention



Tools for protecting against cyber threats from external attacks

Access Control



Strengthened surveillance for tracking the access of patient information

Data Protection



Encryption functions for safeguarding data whether at-rest or in-transit

Samsung HM70A Compatible Transducers / Probes

Curved array transducers



CA1-7AD

- Application: abdomen, obstetrics, gynecology, musculoskeletal
- Field of view: 70°



C2-6

- Application: abdomen, obstetrics, gynecology
- Field of view: 57.5°



SC1-6

- Application: abdomen, obstetrics, gynecology
- Field of view: 60.61°



CF4-9

- Application: abdomen, obstetrics, gynecology
- Field of view: 60.61°

Endocavity transducer



EVN4-9

- Application: obstetrics, gynecology, urology
- Field of view: 148°

Linear array transducers



L4-7

- Application: abdomen, musculoskeletal, small parts, vascular
- Field of view: 44.16mm



LA3-16AD

- Application: small parts, vascular, musculoskeletal
- Field of view: 38.4mm



L5-13

- Application: musculoskeletal, small parts, vascular
- Field of view: 38.4mm



L7-16

- Application: musculoskeletal, small parts, vascular
- Field of view: 38.4mm



LS6-15

- Application: musculoskeletal, intraoperative
- Field of view: 25.6mm

Volume transducers



V5-9

- Application: obstetrics, gynecology, urology
- Field of view: 150.6°



VN4-8

- Application: abdomen, obstetrics, gynecology
- Field of view: 76°

Phased array transducers



PE2-4

- Application: abdomen, cardiac, TCD
- Field of view: 90°



P3-8

- Application: abdomen, cardiac
- Field of view: 90°

CW transducers



DP2B

- Application: cardiac



CW2.0

- Application: cardiac



CW4.0

- Application: cardiac



MMPT3-7

- Application: cardiac